



ND LOR Uničov, a.s.

| www.ndlor.cz

E303.M2

ELECTRIC ROPE SHOVEL

Engine power 260 kW

Operating weight up to 110 000 kg

Bucket capacity up to 5 m³

Operating costs about €0,19/t (for €0,23/kWh - current EU average)

ELECTRIC DRIVE

THE LOWEST OPERATIONAL COSTS

ECOLOGICAL OPERATION



E303.M2 | ELECTRIC ROPE CRAWLER SHOVEL

ELECTRIC MOTOR

The electric motors of rope shovel enable to work ecologically with the lowest operating costs. An electric cable with increased protection for heavy working conditions is used to transfer electric energy to the excavator. Due to this fact the E303.M2 is also suitable for working inside of industrial buildings.

OPERATIONAL COSTS

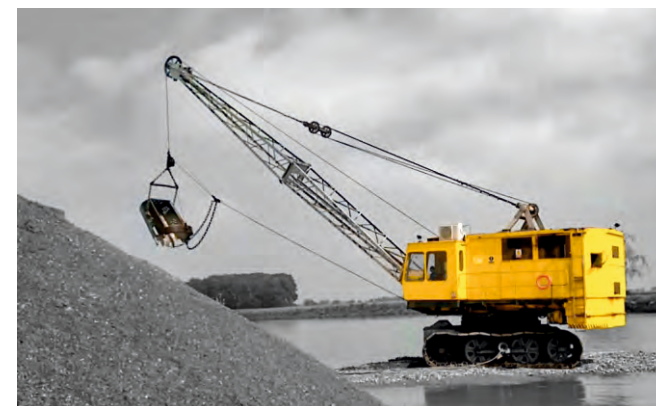
The E303.M2 has an electric motors, which are able to work with extremely low operating costs. It is able to load up to 695 m³ of material per one hour. Electricity consumption is about 0,95 kWh per one tonne of loaded material - this is in conversion about €0,19 per tonne (for current EU average cost of electric energy - €0,22/kWh).

ECOLOGY

Electric motors of E303.M2 shovel are also related to the quieter operation of the machine and self-evidently is completely emission-free.

TECHNICAL SPECIFICATION

Number of Electromotors	3
Net Power of Engines	200 - 260 kW
RPM	970 rpm
Supply Voltage	380 / 500 / 6000 / 10 400 V
Maximum Breakout Force	290 kN
Boom Length	10 m
Dragline Boom Length	20 / 25 / 30 m
Dragline Capacity	1,7 m ³
Dragline Output	100 - 150 m ³ /h
Working Air Pressure	0,59 MPa
Swing Speed	3,5 rpm
Travel speed	1 km/h
Gradeability	15°
Undercarriage Width	4,6 / 4,95 / 5,55 m
Track Width	0,65 / 1 / 1,3 m
Maximum Ground Pressure	188 / 124 / 97 kPa
Operating Weight	96 800 - 115 300 kg
Bucket Capacity (SAE)	3,4 / 4,5 / 5 m ³
Bucket Width	1,8 / 1,8 / 2,04 m



DIMENSIONS & REACH

